

Tynecastle Events

Conference & Events 2017/18



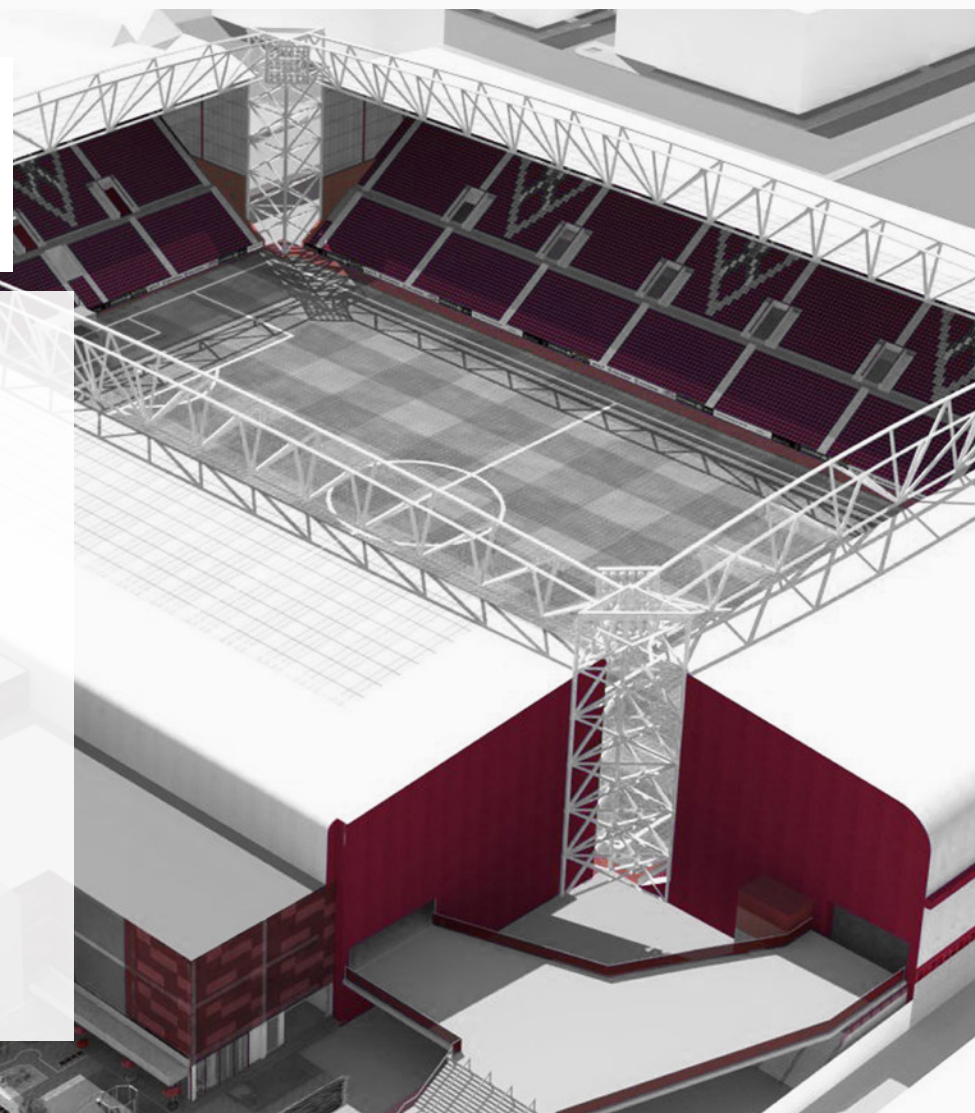
Welcome To Tynecastle Park

**Tynecastle Park is an Edinburgh institution.
Home of Heart of Midlothian FC, it is very much
the Heart and Soul of Edinburgh.**

Offering adaptable meeting spaces and facilities, a wide choice of award winning catering options, and a unique and inspirational setting, the stadium is ideal for meetings and events in Edinburgh.

The stadium is currently undergoing the biggest redevelopment in its 100+ year history, and a new state-of-the-art Main Stand will soon open.

The arrival of the new Main Stand will bring with it completely new conferencing and events suites, offering the very best in facilities. These modern, versatile and luxurious suites will be furnished to a high standard, and will be tech-ready with the latest AV and high speed internet facilities.



Why Tynecastle Events?

Heart of Midlothian is a club steeped in heritage with a reputation as a family friendly club with a proud record of community involvement. We thrive on doing the 'right thing' and this is a philosophy that runs throughout the club - and in all departments.

Tynecastle Park is located only a short walk from Edinburgh City Centre and Haymarket Train Station. It is a short 20 minute journey from Edinburgh Airport. It enjoys excellent links to local motorways (M8 & M9).

The stadium offers eight suites, including the very special Skyline Lounge, Directors' Suite and Museum - three unique spaces unmatched in Edinburgh's capital.

We can accommodate conferences, seminars, meetings, private parties, funerals, celebrations, dinner dances and weddings. Our team will work with you to tailor your event and help you enjoy the unique atmosphere generated at Tynecastle.

Expect award winning service and an exceptional experience.

TYNECASTLE PARK



SKYLINE
LOUNGE

DIRECTORS
SUITE

THE
MUSEUM



SKYLINE LOUNGE

The jewel in the crown of the new main stand, the skyline lounge provides exclusive access to a rooftop terrace.

This contemporary space is ideal for exclusive dinners or VIP receptions.

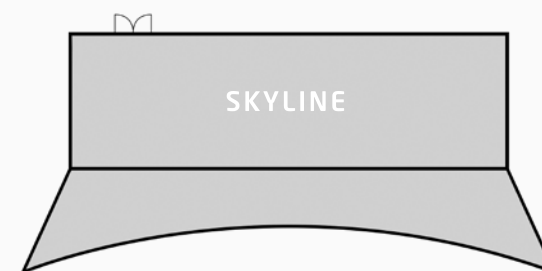


SETUP

Theatre
Dinner
Cabaret
Reception

CAPACITY

100
260
100
300



DIRECTORS LOUNGE

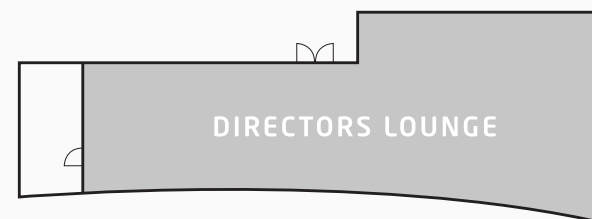


On matchdays the exclusive Directors Suite is home to great and the good of Scottish Football. It offers a uncommon setting for variety of events.

Situated on the first floor of the new main stand this suite can be used in conjunction with Suite 2 and provides a very special setting for either dinner or a drinks reception.



SETUP	CAPACITY
Theatre	N/A
Dinner	100
Cabaret	N/A
Reception	150



THE MUSEUM

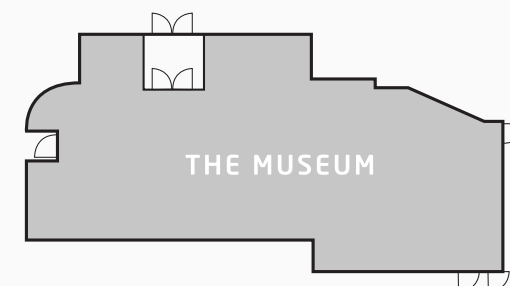


This space is unique in Edinburgh, The museum offers an exceptional, bright and surrounded by the Club's history, situated next to the Gorgie Suite.

Ideally for a private board meeting, syndicate room for the Gorgie or an intimate dinner.



SETUP	CAPACITY
Theatre	N/A
Dinner	18
Boardroom	18
Reception	50



FUNCTION SUITES



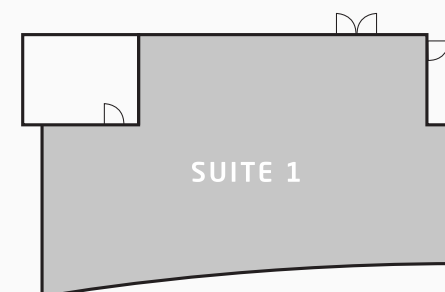
SUITE 1

Situated on the first floor of our new main stand, this suite will be filled with natural day light.

The room layout, provides two distinct areas, which has proven the perfect model for boardroom meetings or smaller conferences which require a separate space for catering or networking.



SETUP	CAPACITY
Theatre	70
Dinner	80
Boardroom	30
Cabaret	70



SUITE 2

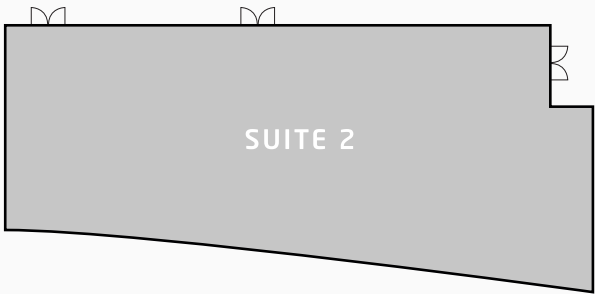


Located on the first floor of the new main stand and in close proximity to the Directors Suite which can be used as a breakout area, this room can be easily adapted to cater to your requirements.

Popular for conferences, dinner dances and examinations.



SETUP	CAPACITY
Theatre	150
Dinner	150
Classroom	100
Cabaret	130



GORGIE SUITE

Tynecastle Park's largest suite is situated on the lower ground floor of our Gorgie Stand. Offering fantastic views of the pitch.

This spacious suite is the ideal setting to hold your networking event, tradeshow, seminar or gala dinner. The suite can also be divided into two with a partition.

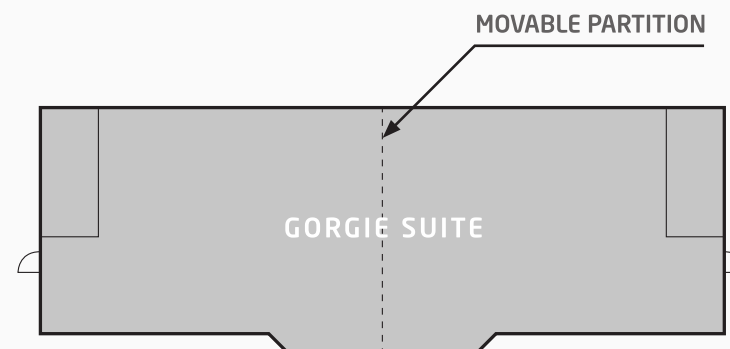


SETUP

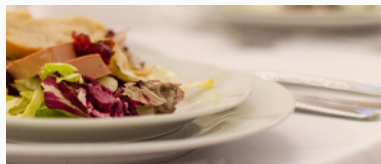
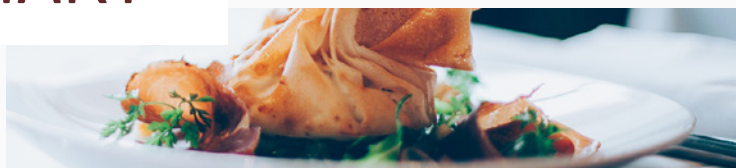
Theatre
Dinner
Cabaret
Classroom








CAPACITY

600
400
240
200



LAYOUT SUMMARY



Rooms							
Skyline Lounge	100	260	160	300	-	-	40
Directors Suite	-	100	-	150	-	-	-
The Museum	-	18	-	50	-	-	-
Function Suites							
Suite 1	70	80	-	80	70	44	30
Suite 2	150	150	130	200	130	100	-
Gorgie Suite	600	400	350	600	250	175	-



DELEGATE PACKAGES



MAIN STAND HALF-DAY DELEGATE PACKAGE

PACKAGE SUMMARY

Exclusive Hire of one of our hospitality suites from 8am-12pm or 1pm -5pm
(*excludes the Skyline Lounge)
Presentation AV which includes: a projector, screen, PA System and Laptop
Personalised Stationery
Water available throughout
Tea / Coffee and a selection of sweet treats served on arrival
Mid Morning serving of Tea / Coffee with fresh fruit platter



MAIN STAND STANDARD DELEGATE PACKAGE

PACKAGE SUMMARY

Exclusive Hire of one of our hospitality suites from 9am – 5pm (*excludes the Skyline Lounge)
Presentation AV which includes: a projector, screen, PA System and Laptop
Personalised Stationery
Water available throughout
Tea / Coffee and a selection of sweet treats served on arrival
Mid Morning serving of Tea / Coffee with individual Jam Tarts
Conference Lunch which includes: A choice of two hot main items, 3 canapés, a dessert, Tea / Coffee and selection of fruit juice
Afternoon serving of Tea / Coffee with fresh fruit platter



MAIN STAND FULL-DAY DELEGATE PACKAGE

PACKAGE SUMMARY

Exclusive Hire of one of our hospitality suites from 9am - 5pm (*excludes the Skyline Lounge)
 Presentation AV which includes: a projector, screen, PA System and Laptop
 Personalised Stationery
 Water available throughout
 Tea / Coffee and a selection of sweet treats served on arrival
 Mid Morning serving of Tea / Coffee with individual Jam Tarts
 Conference Lunch which includes: A choice of two hot main items, 3 canapés, a dessert, Tea / Coffee and selection of fruit juice
 Afternoon serving of Tea / Coffee with fresh fruit platter
 A different hospitality suite with bar facilities until 11.30pm
 Drinks reception (providing a glass of prosecco and a top up)
 3 Course Meal with Tea / Coffee
 Half Bottle of wine per person
 Cash Bar Facilities



THE AWARD WINNING EXPERIENCE





STADIUM EXPERIENCE: SILVER AWARD

This award compares similar sized stadiums across the UK.

Independent judges marked Tynecastle on value for money based on 35 key criteria, including the welcome offered by staff, facilities, catering experience and quality of staff. Tynecastle was the voted best in Scotland in that category, and 2nd in the UK.



BEST BAR NONE: GOLD AWARD

Best Bar None is a National Award Scheme promoting public safety and customer care in relation to the numerous hospitality events that are hosted at Tynecastle Stadium.



TRIP ADVISOR: CERTIFICATE OF EXCELLENCE

This Certificate is awarded to properties that consistently achieve outstanding traveller reviews on Trip Advisor. Tynecastle continually operates with 5* reviews and the club prides itself on the warm and friendly welcome it offers to all guests. The club has held this for three consecutive years.





TO BOOK YOUR EVENT
OR FOR FURTHER DETAILS
PLEASE CONTACT OUR EVENTS TEAM



EVENTS@HOMPLC.CO.UK
TEL: 0131 200 7240

